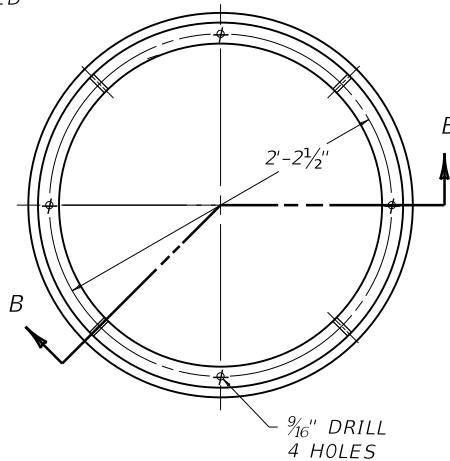
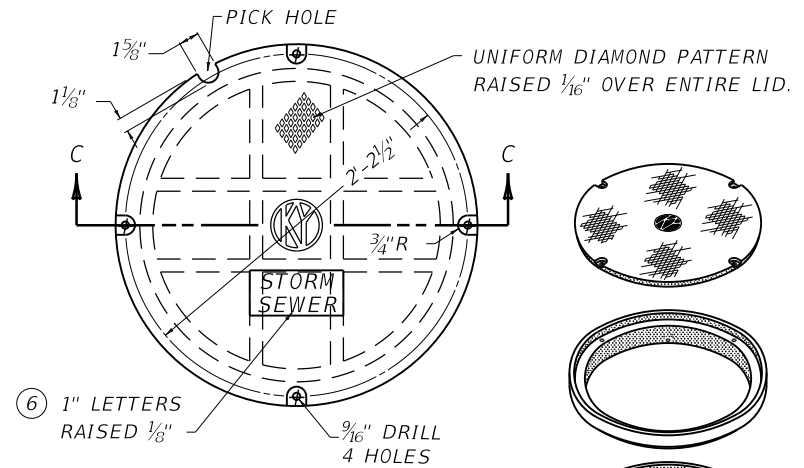


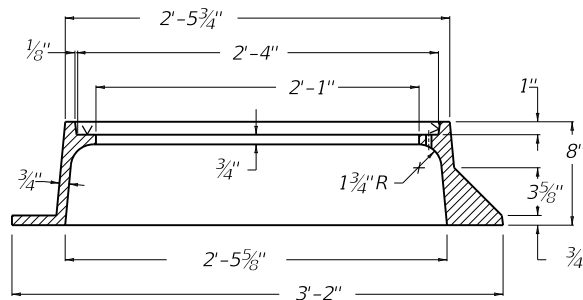
PLAN VIEW



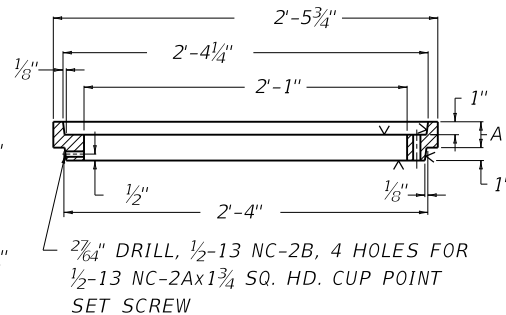
PLAN VIEW



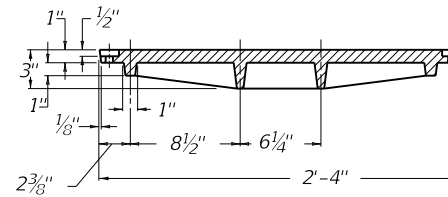
PLAN VIEW



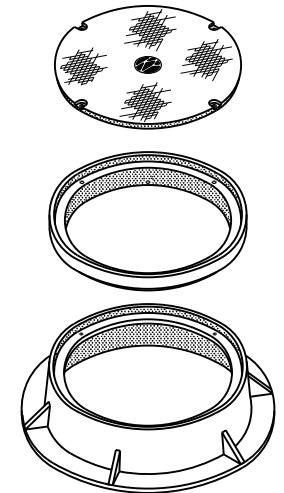
FRAME SECTION A-A



ADJUSTING RING SECTION B-B



LID SECTION C-C



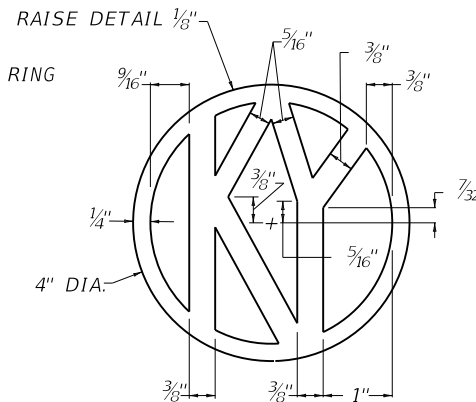
ISOMETRIC EXPLODED VIEW

DIMENSION A (8)
1 1/2"
2"
2 1/2"
3"

APPROX. WEIGHT
FRAME — 270 LBS.
LID — 240 LBS.

~ NOTES ~

- BID ITEM AND UNIT TO BID
 FRAME AND LID TY 2 EACH
- THE LID SHALL BE FASTENED WITH 1/2-13 NC-2Ax2 HEXAGON CAP SCREW. WHEN THE ADJUSTING RING IS USED ADD DIMENSION (A) SHOWN IN SECTION B-B TO THE LENGTH OF THE CAP SCREW.
 - THE CAP SCREWS AND SET SCREWS SHALL BE STAINLESS STEEL, TYPES 302, 304, AND 430 CONFORMING TO ASTM A276.
 - MANUFACTURER'S TOLERANCES WILL BE ACCEPTED ON ALL DIMENSIONS.
 - ADJUSTING RINGS WHEN REQUIRED SHALL BE PAID FOR AT THE CONTRACT UNIT PRICE EACH AND SHALL INCLUDE THE NECESSARY HEX HEAD BOLTS AND SET SCREWS.
 - THE "v" DENOTES MACHINED SURFACE.
 - VARIATION IN LID LETTERING (SEE PIPE SUMMARY) DENOTES SEWER TYPE:
 (A) STORM SEWER
 (B) SANITARY SEWER
 (C) SANITARY AND STORM SEWER
 - THE "KY" SYMBOL SHALL APPEAR ON ALL LIDS.
 - NET HEIGHT OF ADJUSTING RING (AS SPECIFIED IN CONTRACT).
 - FRAME AND LID TYPE 2 SHALL BE USED IN VEHICULAR TRAFFIC AREAS.



DETAIL OF "KY" SYMBOL

KENTUCKY
 DEPARTMENT OF HIGHWAYS

FRAME AND LID
 TYPE 2

STANDARD DRAWING NO. RDM-105-03

SUBMITTED *[Signature]* 12-01-15
DATE

APPROVED *[Signature]* 12-01-15
DATE
STATE HIGHWAY ENGINEER